

Mechanical chart recorders are reliable and accurate for recording of pressure in many applications. New in the field, we are yet manufacturing and supplying chart recorders for industry in INDIA at present SUNSUI recorders are designed for indoor as well as outdoor use and designed and developed for harsh environment.

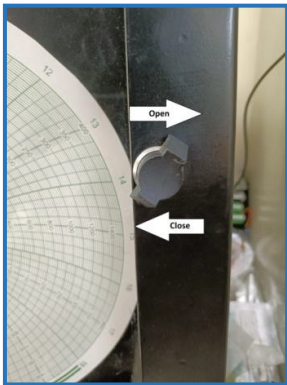
#### □ Features :

- Made of Mild Steel to prevent distortion or warping
- Pressure recorder air vent holes.
- Durable Stainless Steel High Grade Pressure Elements
- Single Pen And Two Pen Available
- Weatherproof Construction in Black /Gray Color Finish.
- Door lockable with durable glasswindow.
- Rugged model for out door application.
- Corrossion resistant Internal Structure.
- Replacable Fiber Tip pens and adjustable links.
- Circular Paper Charts in 10" size.
- Front dooropening recorders to change charts,pens or batteries as well winding of mechanical clocks.
- Corrosion resistant under coat and black coat for long lasting and rust free usage.
- Doors with sealed lock.
- Flush mount case.
- Pressure connections are located at the rear bottom of the case or it may also vary according to your requirement.
- All internal components are corrosion resistant.
- **Wall Mount** - Pressure connection at bottom of the case
- **Flush Mount** - Pressure connection at back of the case
- **Pipe Stand Mount** - Optional
- **Portable** - Pressure connection and back and bottom of the case with handle on top

| Bar  | Pressure (Kg/Cm) | Bourdon |
|------|------------------|---------|
| 100  | 101.972          | SS 316L |
| 200  | 203.943          | SS 316L |
| 400  | 407.886          | SS 316L |
| 700  | 713.801          | SS 316L |
| 1000 | 1019.72          | SS 316L |

## Operational Instruction –

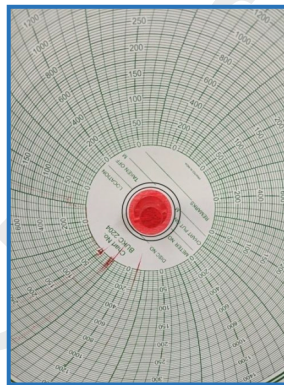
**1. Opening And Closing The Enclosure-**  
Use The Locking Knob To Open Or Close As Mentioned-



**ROTATE CLOCKWISE TO OPEN**

**ANTI-CLOCKWISE TO CLOSE.**

**2. Changing Charts-**  
Rotate the Nozzle marked in red to loosen or tighten the paper.



**ROTATE CLOCKWISE TO OPEN**

**ANTI-CLOCKWISE TO CLOSE.**

## 3. Pressure Inlet-

Pressure Inlet Consists Of One Female Component

Rotate each Spec Anti Clockwise to Open And Clockwise To Tighten

Size- ¼ BSP SS Threading

## Pressure Chart – Bars To Kgs

